

CLEANSTAR®

Model 2500CW Standard



Installation Guide



Darling International Inc. CleanStar Office
5601 N. Macarthur Blvd., Irving, TX 75038
Phone: 972.717.0300 Ext.22173 Fax: 972.717.1588



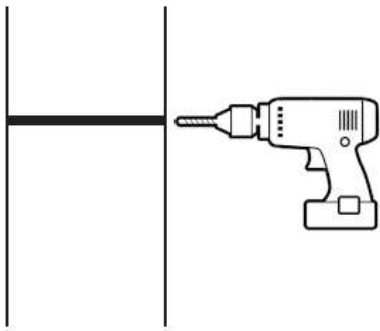
Installation

Before Starting

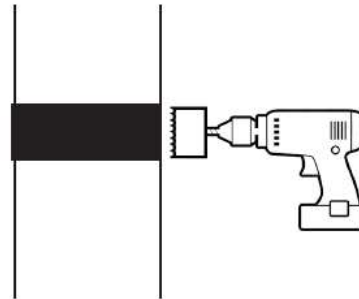
1. Confirm the installation location of the Tank. Some applications will require additional plumbing not included. Locate the tank so the load pipe and the two emergency vents are towards the wall (**SEE DIAGRAM ON NEXT PAGE**)

Tank Evacuation plumbing

2. Plumb the 2-inch evac pipe, which is located between the two 4-inch emergency vents at the top of the tank, to the outside of the building with the cam fitting located 5 feet above grade. This will allow the service truck driver easy access. (Do not plumb the containment port at the bottom of the tank to the outside.)

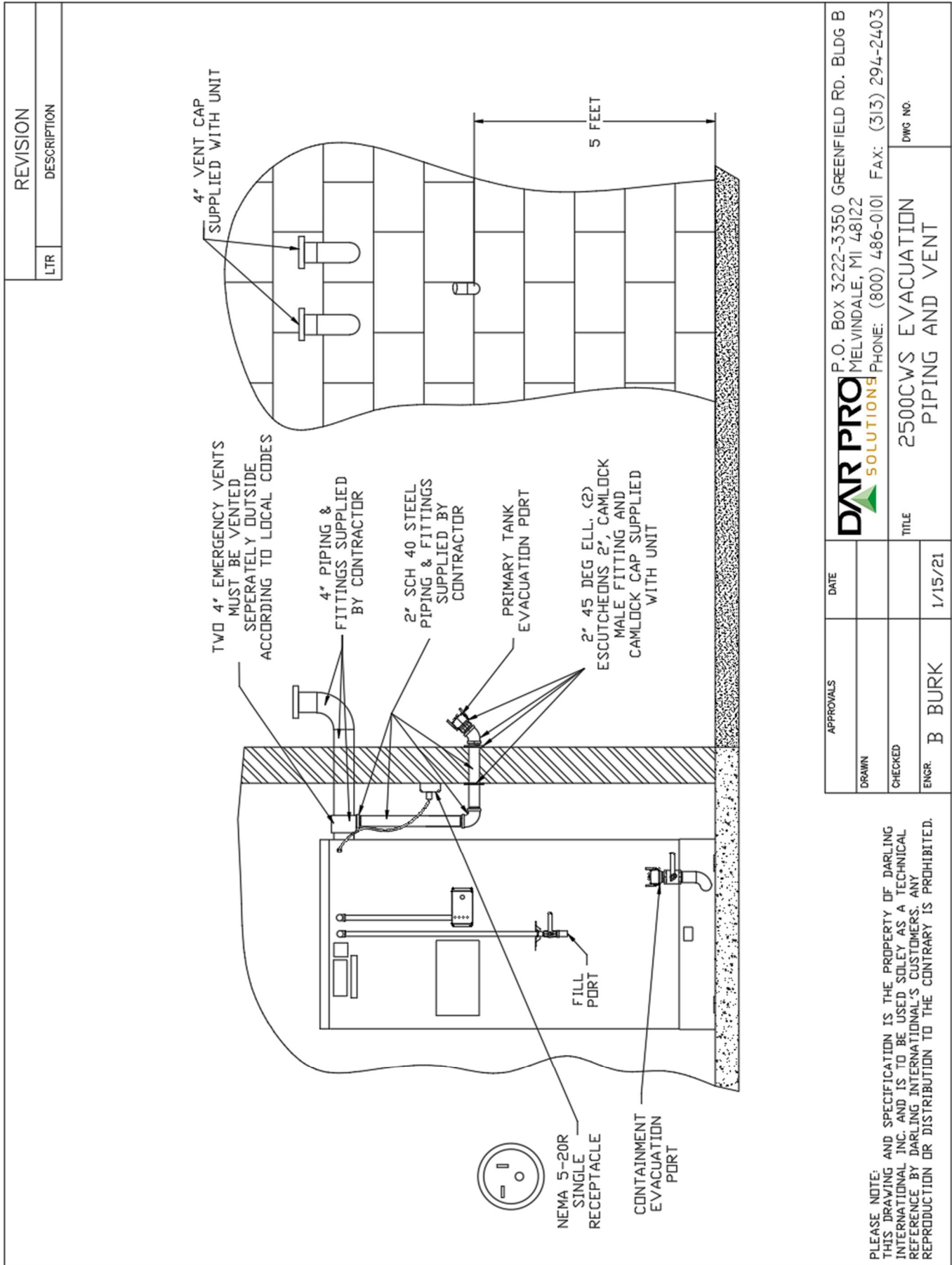


Drill a 1/4" pilot hole through the exterior wall. Before drilling always check the wall for electrical, plumbing or any other obstructions.

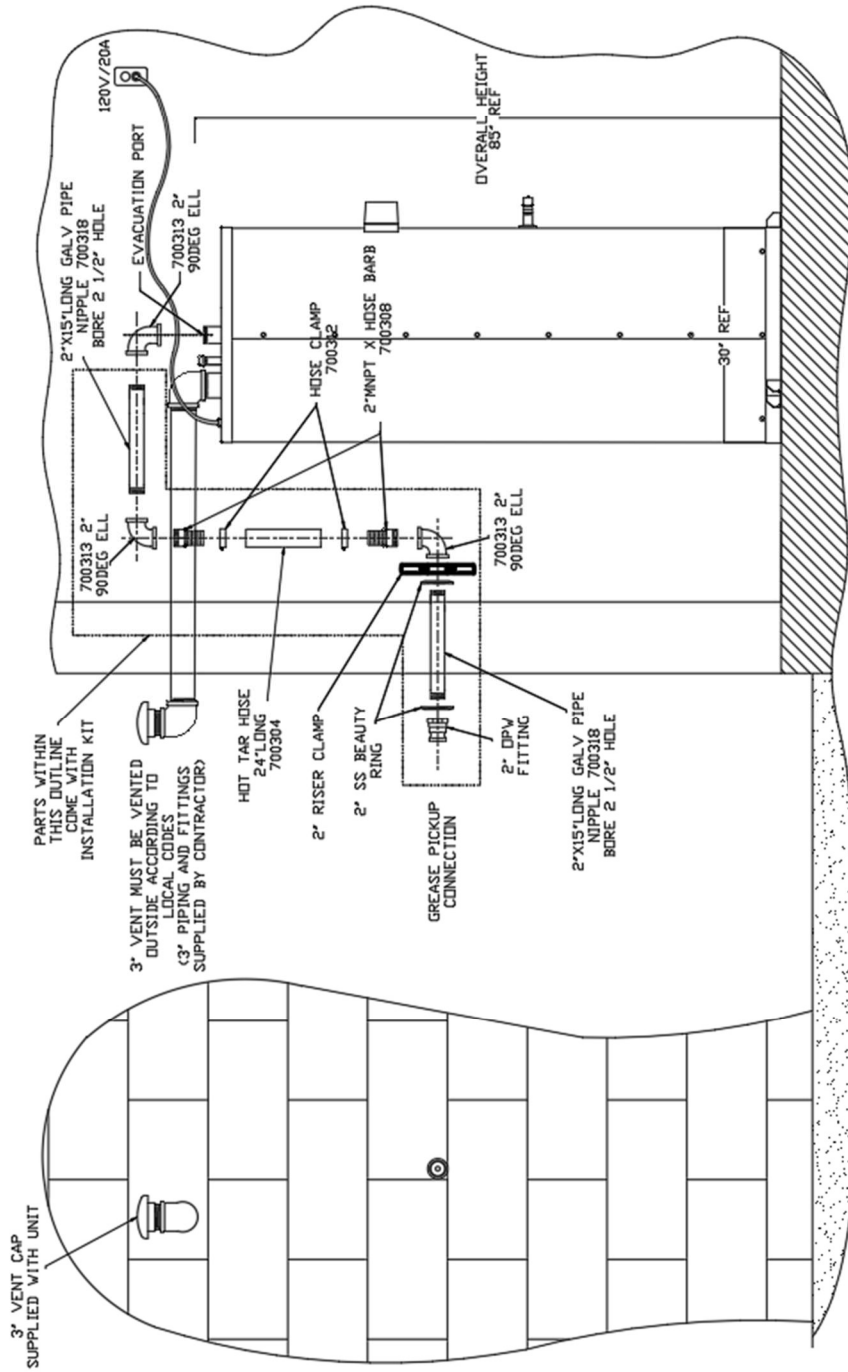


Using the pilot hole, bore a 2.5" hole halfway through the wall from the inside of the building, then complete the hole from the outside, meeting in the middle of the wall. This will reduce chipping of the wall surface.

3. The Grease collection fitting should be flush against the exterior of the building. Seal all wall penetrations and the seam between the floor and the bottom of the tank with food grade sealant.
4. Plumb both 4-inch emergency vents to the outside according to local code specifications. Unions at the tank are recommended. ***If code calls for these vents to run straight up through the roof of the building, the tank will NOT support the weight of these vent pipes. These pipes must be supported to the building in some way.***
5. Plug the power cord into a 120 Volt 2 pole 3 wire straight blade single dedicated receptacle (NEMA 5-20R) on the wall located near the top of the tank. (**SEE DIAGRAM ON NEXT PAGE**)
6. Plug caddy into control panel and test by pushing the Push to Pump button on the control panel.



REVISION	
LTR	DESCRIPTION



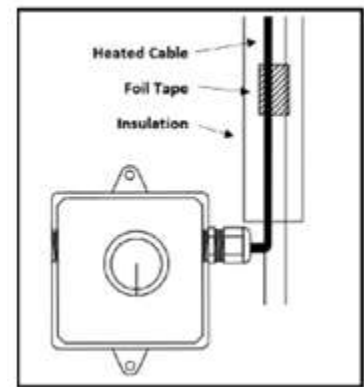
APPROVALS		DATE	1/15/21	
DRAWN				
CHECKED				
ENGR.	B BURK			

DAR PRO SOLUTIONS P.O. Box 3222-3350 Greenfield Rd. Bldg B Melvindale, MI 48122 Phone: (800) 486-0101 Fax: (313) 294-2403		1500C EVACUATION PIPING AND VENT FOR COSTCO	
1500C EVACUATION PIPING AND VENT FOR COSTCO		Dwg No.	

PLEASE NOTE: THIS DRAWING AND SPECIFICATION IS THE PROPERTY OF DARLING INTERNATIONAL INC. AND IS TO BE USED SOLELY AS A TECHNICAL REFERENCE BY DARLING INTERNATIONAL'S CUSTOMERS. ANY REPRODUCTION OR DISTRIBUTION TO THE CONTRARY IS PROHIBITED.

Heat Trace Installation

Controller requires 120V, (MAX 10A)

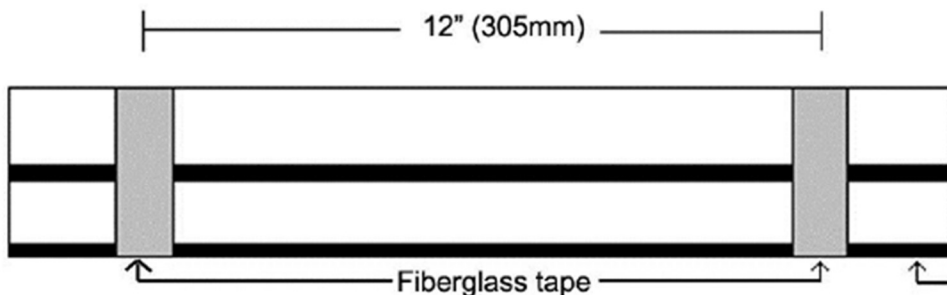


1. Electrical Requirements

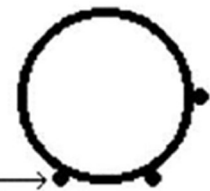
- a. 120V (max 10A)
 - i. Outlet must be within 10' of controller.
- b. **CAUTION: DO NOT** use the same outlet as the tank that is installed. The tank is required to be on it's own 20A dedicated circuit.

2. Wrapping Techniques

- a. A straight run is the simplest to install. It is possible to have multiple straight runs on a single object. With a single straight run, position the cable at the bottom of a horizontal pipe. With multiple straight runs, position the cable(s) so they DO NOT touch our overlap itself.
 - i. **CAUTION: DO NOT** overlap or allow the cable to touch itself.



Straight Run (side view)



Straight Run (end view)

- b. Wrap adhesive tape every 12" to secure the cable to the pipe.
- c. All parts of the heating cable **MUST** make intimate contact with the pipe.
- d. Avoid kinking the cable when making 90 degree turns in the run.

3. Insulate

- a. Encase pipe and heat cable with fiberglass pipe insulation and secure with insulation tape to seal all joints and seams.