

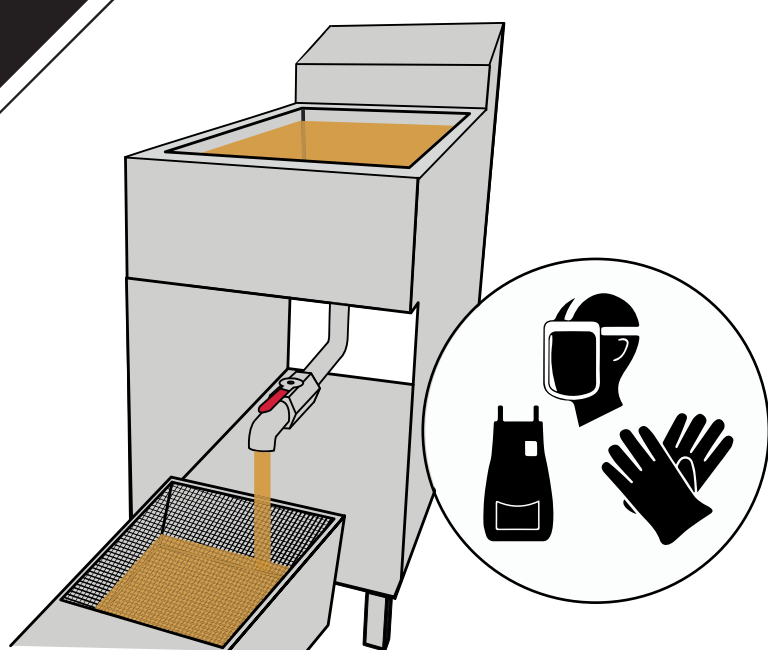
# MODEL 401 CADDY



ONLY clean fryers or discard oil AFTER you have been properly trained.  
Wear personal protective equipment (PPE). NEVER pump water into tank.

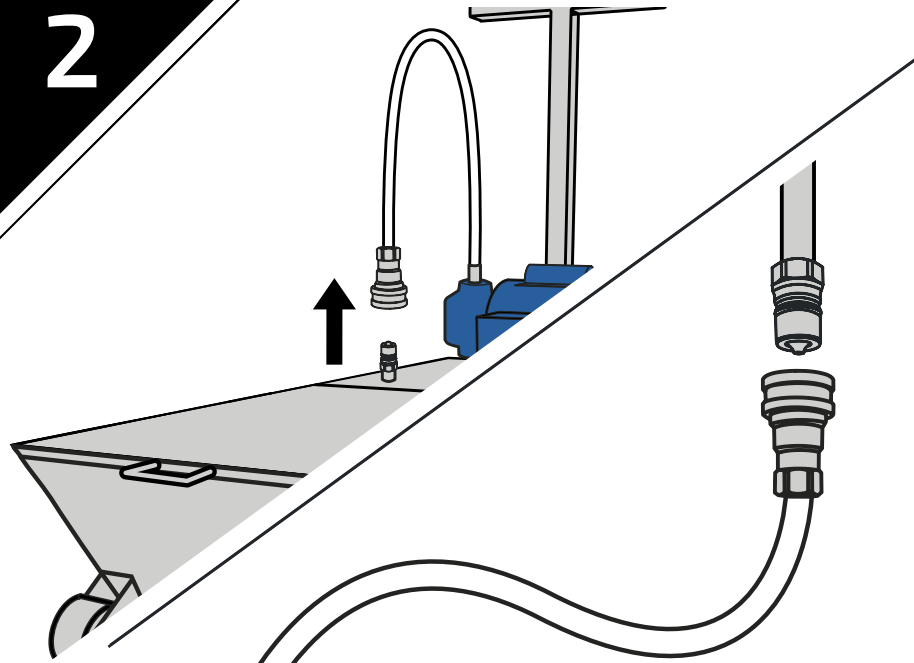


1



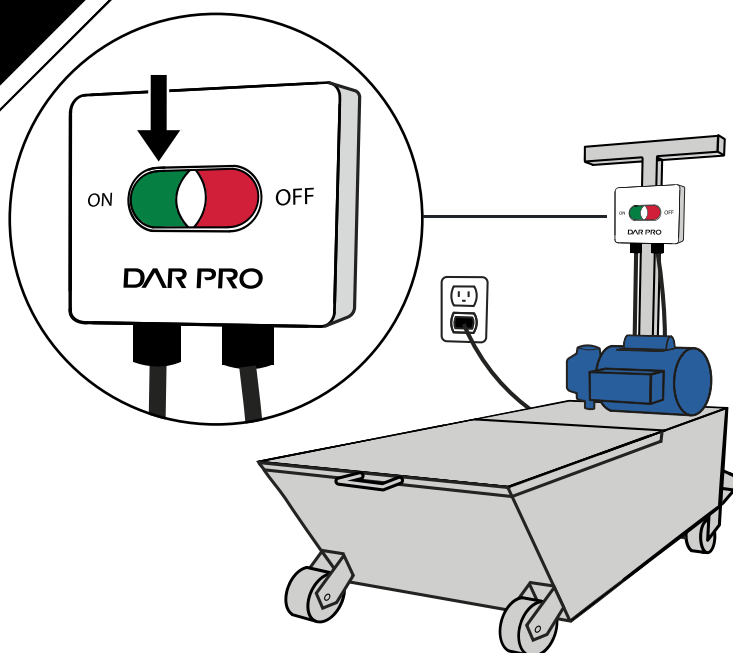
**Remember your PPE!** Drain the oil from the fryer through the caddy crumb basket. Make sure caddy lid is in place before transporting.

2

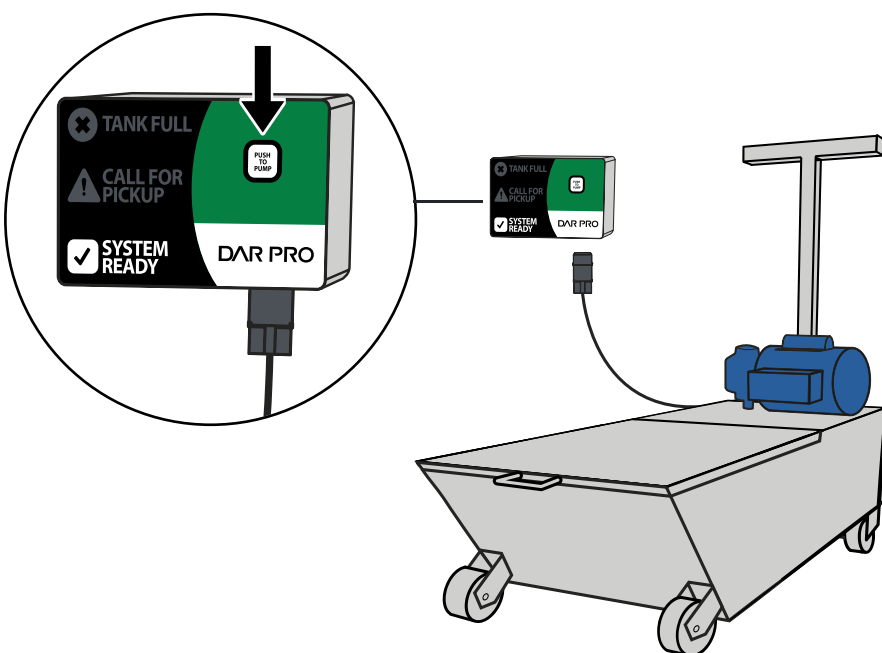


Remove the female quick disconnect from the caddy by pulling back on the collar. Connect the hose to the tank fill line.

3

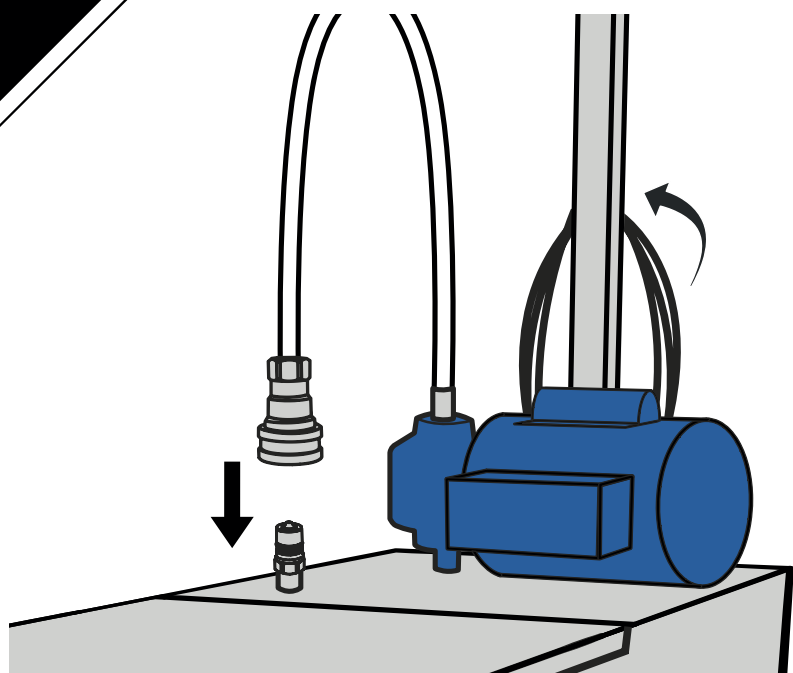


If your caddy has a Push to Pump (PTP) panel, plug the caddy into a wall outlet. Press the green Push to Pump button to discharge the oil.



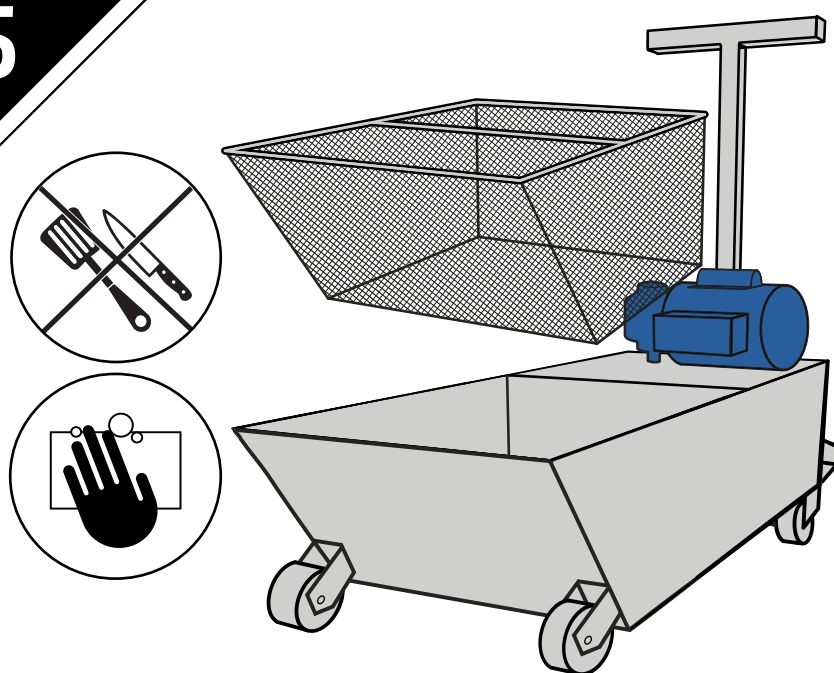
For a non-PTP caddy, connect the caddy cord from the motor to the tank control panel. Press the Push to Pump button to discharge the oil.

4



Once all of the oil has discharged from the caddy, reconnect the hose and coil the cords.

5



Clean the caddy and the crumb basket. Never use metal or sharp utensils on the crumb basket.

**SCAN FOR EQUIPMENT / PARTS & SERVICE**

