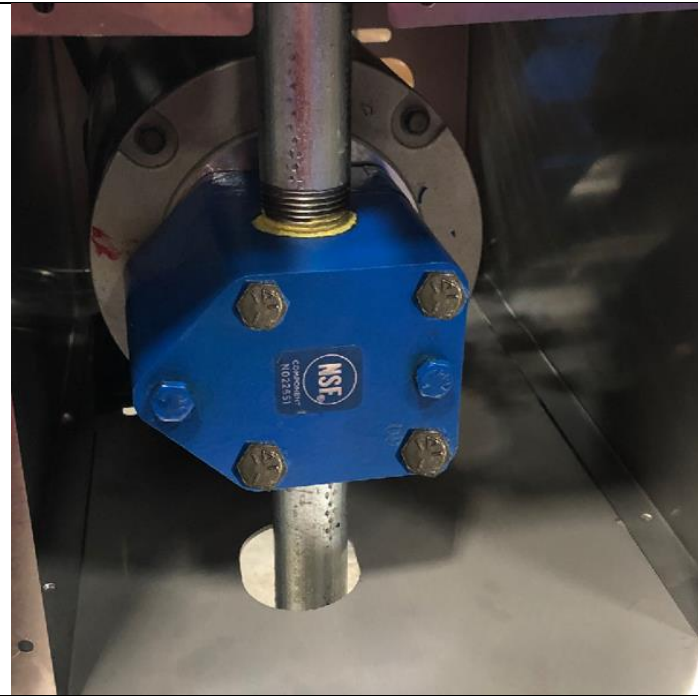
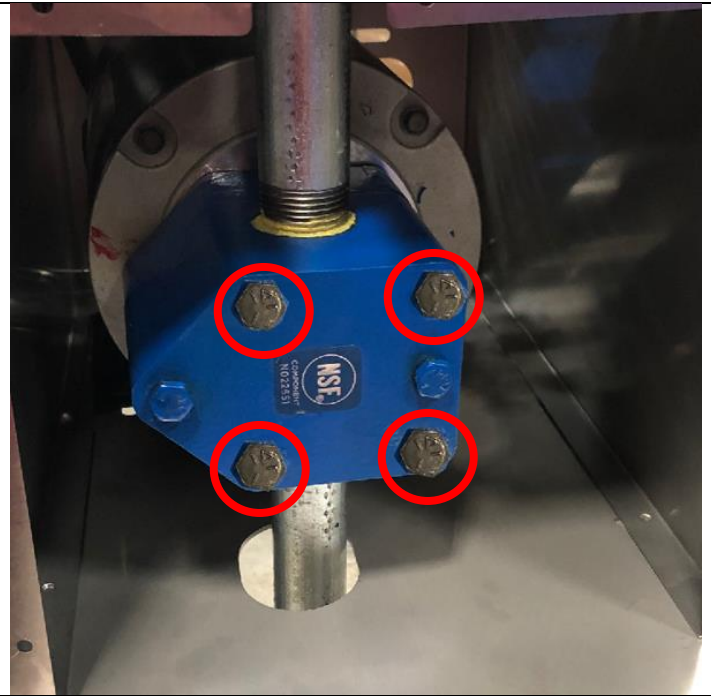


Viking Pump Head removal and cleaning

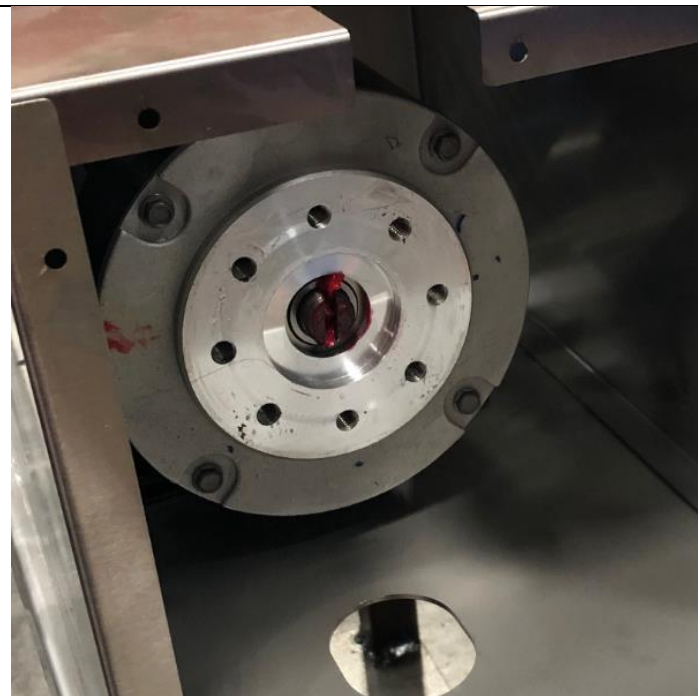
If your motor is enclosed in a stainless steel shroud, first remove the side of the shroud.



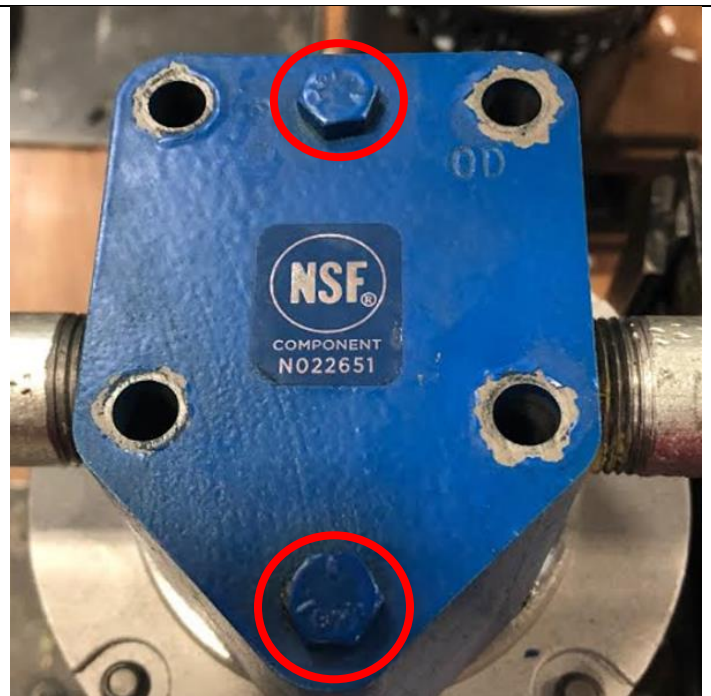
Disconnect any fittings beyond the pipe nipples directly connected to the pump



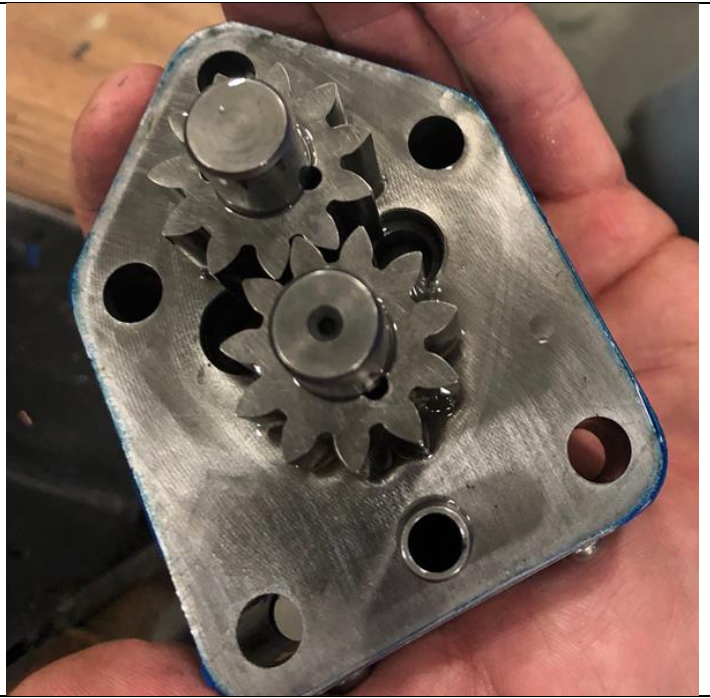
Remove the 4 black bolts, this will disconnect the pump head from the motor.



Remove the pump head.



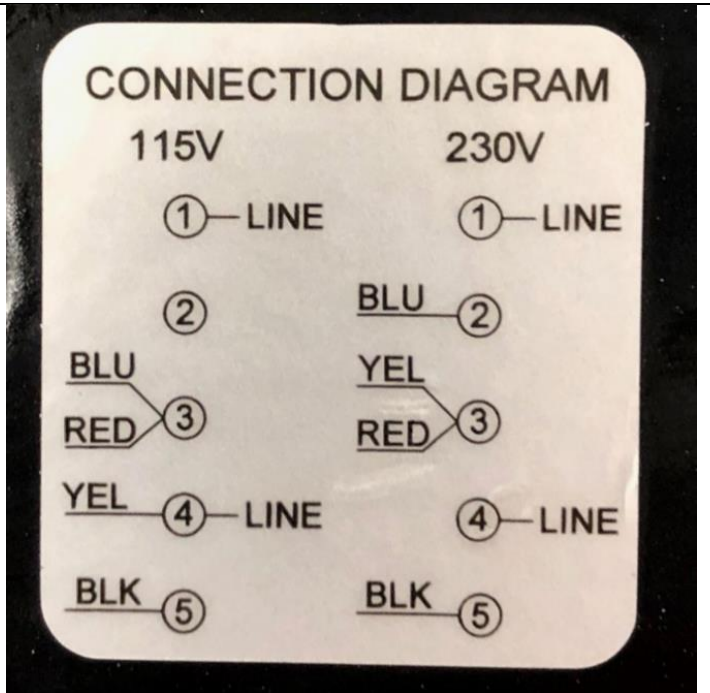
Remove the 2 blue bolts. This will allow the pump head to open, exposing the gears



Inspect the gears for any debris, clean if necessary



Reassemble the pump head and attach to the motor. Make sure you reference the FLOW diagram on the pump head to ensure correct orientation



Viking Pump Electrical Diagram