

QUICK START GUIDE



Scan for Equipment / Parts & Service
www.darpro-solutions.com

61-10128

1 BEFORE STARTING

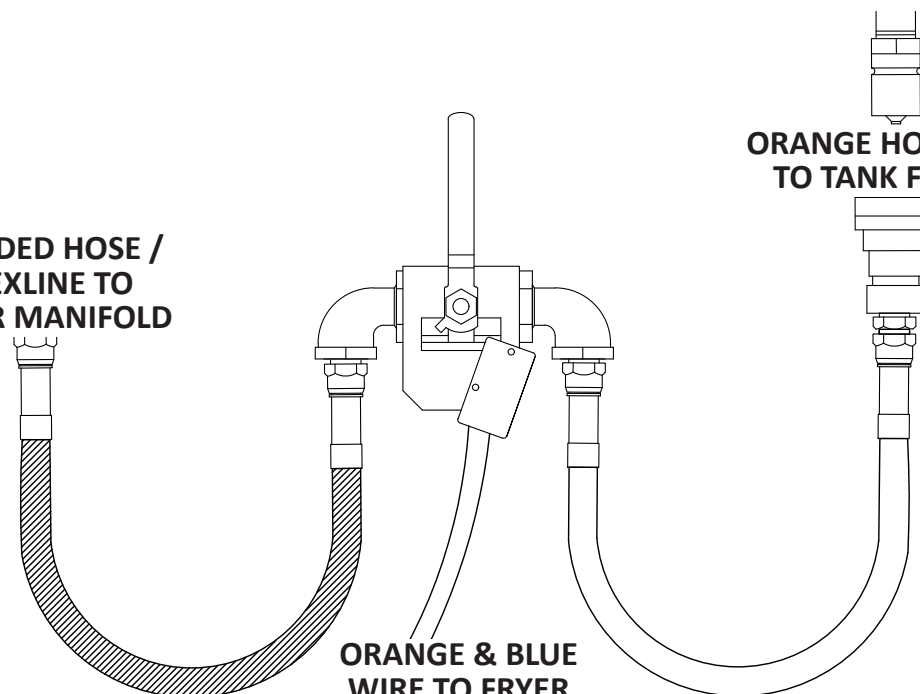
Installation may differ slightly between Fryer models.

- Inspect the general condition of the fryer, and ensure it is in good working order.
- Confirm you have room to mount the Discharge Kit valve to the Fryer Frame.
- Operate the fryer pump and make sure it works properly. Listen to the pump to see if it is operating smoothly, and that it turns on and shuts off properly.
- After inspecting the fryer, disconnect power during installation.

**BRAIDED HOSE /
FLEXLINE TO
FRYER MANIFOLD**

**ORANGE HOSE W/QD
TO TANK FILL LINE**

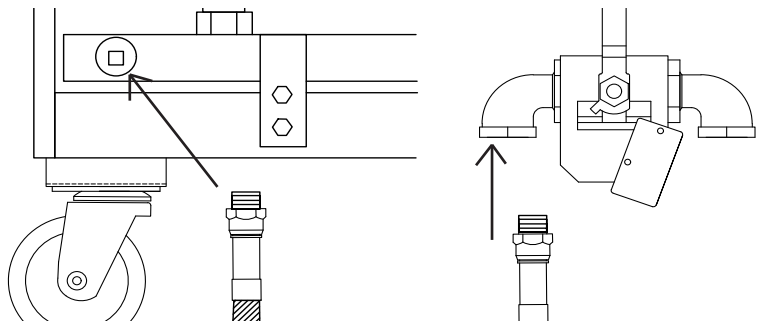
**ORANGE & BLUE
WIRE TO FRYER
MICROSWITCH**



2 PLUMBING

Frymaster

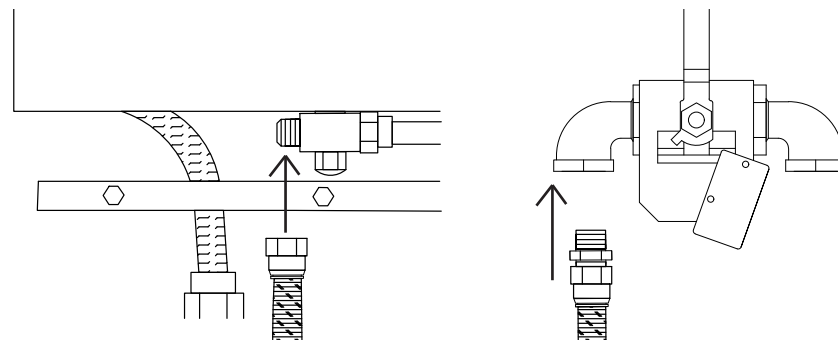
- Locate the cap /plug on the rectangular manifold at the rear of the fryer. Remove this cap/plug and install the short braided hose. **MAKE SURE HOSE IS TIGHT!** Attach the other end of the short braided hose to the Valve Assembly included with this kit. In rare instances the fryer may have a flare fitting. If this is the case and adapter will be required.



- Mount the included Valve Assembly to the fryer frame with the included Conduit Clamps. Each fryer is different. Ensure there is enough room to easily open and close the valve.
- Attach the Orange hose to the other end of the Valve Assembly, then install the Male QD to the Tank Fill line and couple the hose.

Pitco

- Locate the capped T flare fitting on the last vat at the rear of the fryer. Remove this cap/plug and install the short flexline. **MAKE SURE HOSE IS TIGHT!** Attach the other end of the short flexline to the Valve Assembly included with this kit.

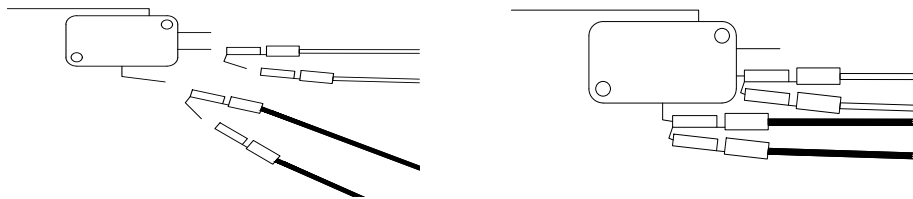


3 ELECTRICAL

IMPORTANT! Ensure Power is disconnected from the fryer.

Frymaster

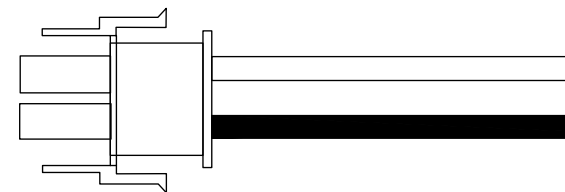
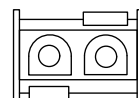
- At the front of the fryer, locate the lever that returns the oil from the filter pan to the fryer pot. This lever will open a valve (located in the front or rear) on the Fryer. Along this assembly locate the existing microswitch with 2 wires (located in the front or rear).
- You will remove the existing wires on the microswitch and replace them with the piggy backs on the provided wiring. Reconnect the existing wires to the piggy back connection.



- Ensure wiring is secured and not resting against any hot surfaces. Zip tie in safe areas
- Restore Power and test system by engaging the included Valve Assembly lever while the oil is in the filter pan.

Pitco

- Locate the 2 pin connector. This is typically a purple and white wire set on the right front side of the fryer, inside the door. Usually zip tied to the frame. In rare instances some fryers will not have a connector. If you are unable to locate the connector, call for assistance.
- Connect the 2 pin plug.



FOR ASSISTANCE CALL: 1-800-486-0101