

61-10042



Scan for Equipment / Parts & Service
www.darpro-solutions.com



Classified to NSF4

1 BEFORE STARTING

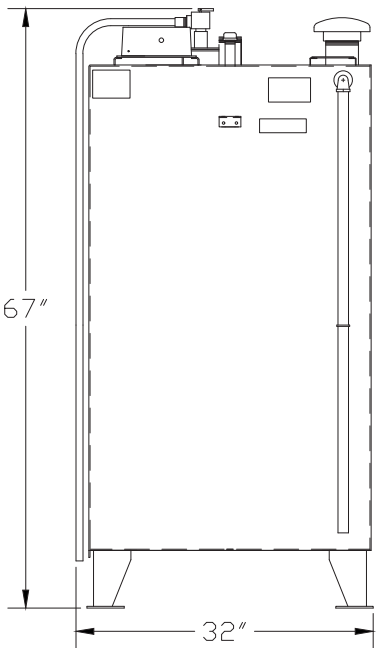
Confirm the installation location of the Tank.
Some applications will require additional plumbing not included in the installation kit.

Electrical Requirements

- 120V, 20A Dedicated Circuit
- Standard Duplex Receptacle

Dimensions

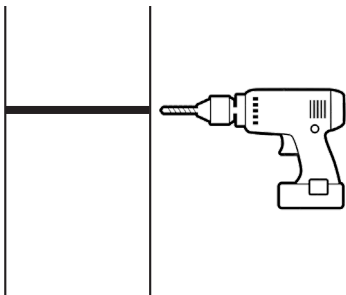
- Height: 67"
- Width: 32"
- Depth: 32"



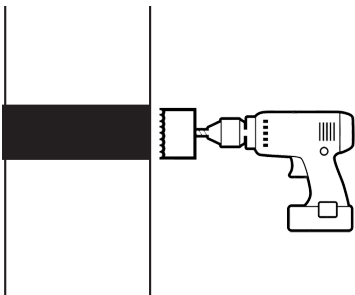
Installation Kit Includes:

- | | |
|------------------------|--------------|
| 1 - JB Weld Epoxy | (PN: 700462) |
| 1 - OPW Fitting | (PN: 700339) |
| 2 - SS Beauty Rings | (PN: 700147) |
| 1 - 2"x15" Pipe Nipple | (PN: 700318) |
| 1 - Riser Clamp | (PN: 700312) |
| 1 - 2" Coupler | (PN: 700473) |
| 2 - Hose Barbs | (PN: 700308) |
| 2 - Hose Clamps | (PN: 700888) |
| 1 - 24" Hot Tar Hose | (PN: 700304) |

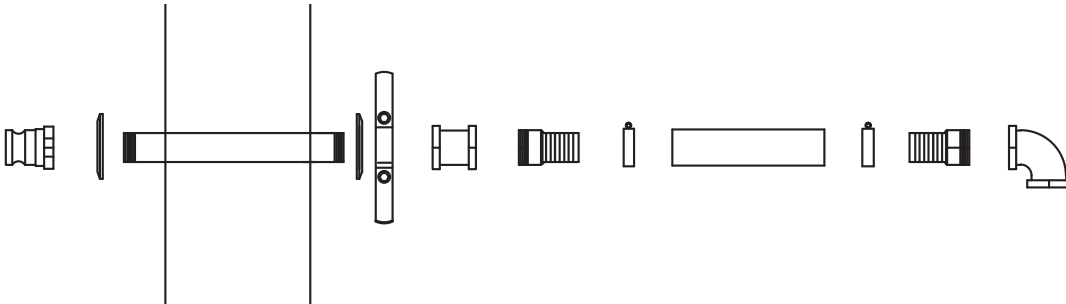
2 TANK EVACUATION PLUMBING



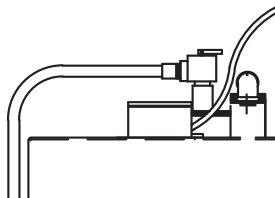
Drill a 1/4" pilot hole through the exterior wall. Before drilling always check the wall for electrical, plumbing or any other obstructions.



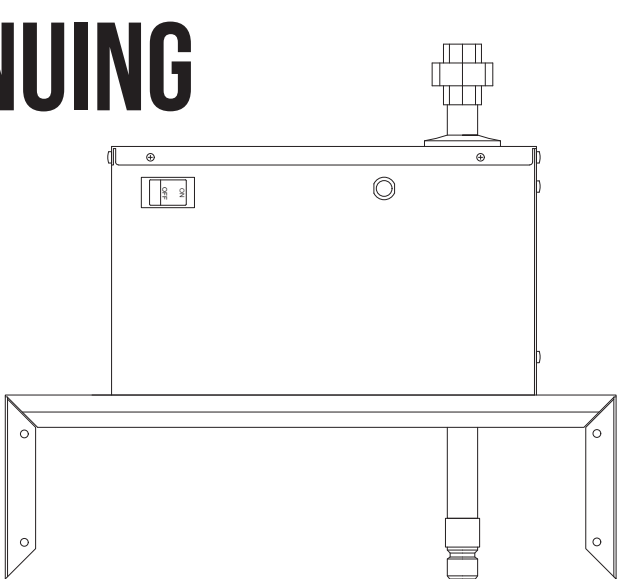
Using the pilot hole, bore a 2.5" hole halfway through the wall from the inside of the building, then complete the hole from the outside, meeting in the middle of the wall. This will reduce chipping of the wall surface.



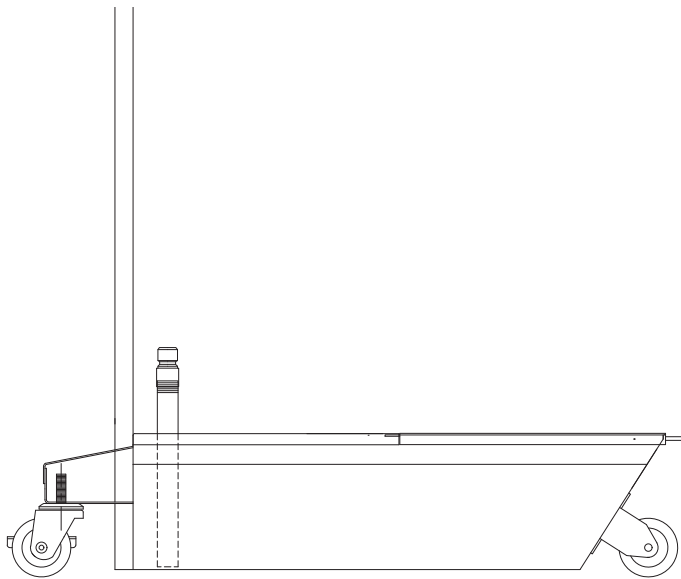
Assemble the Evac Piping as pictured. The Grease collection fitting and SS Beauty Ring should be flush against the exterior of the building. Use the supplied JB Weld to secure fittings. If required the Black Tar Hose can be cut to length. **Seal all wall penetrations.**



3 BEFORE CONTINUING



If your Tank has shipped with a Pump Station, continue by following the directions supplied with the Pump Station

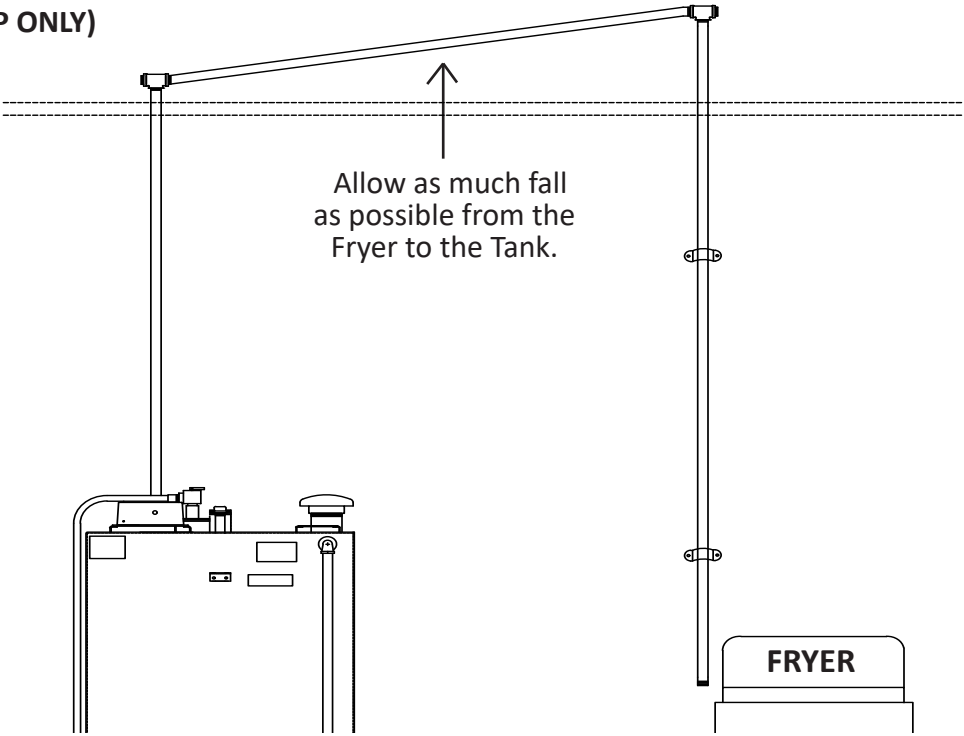


If your Tank has shipped with a Caddy/Portable Grease Shuttle the remaining directions do NOT apply.

FILL LINE PLUMBING (DIRECT PUMP ONLY)

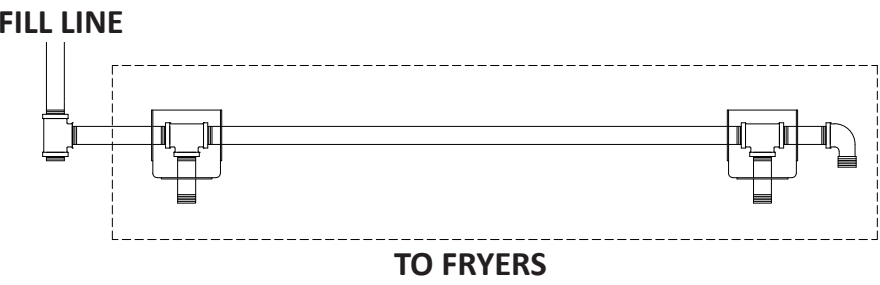
If your Tank has shipped with a Caddy/Portable Grease Shuttle, Fill Line installation is not required.

- Run 3/4" Edible hose (PN: 700416) or 3/4" schedule 40 pipe (black or galvanized) from the Fryer/Pump Station to the 3/4" galvanized union at the top of the tank.
- Always plumb in a direct route with as much fall from the fryer area to tank as possible. Allowing the grease to always fall towards the tank.
- Use T's and plugs instead of elbows whenever plumbing is accessible, to facilitate clean-out.
- Any applications using solid shortening should be heat traced.

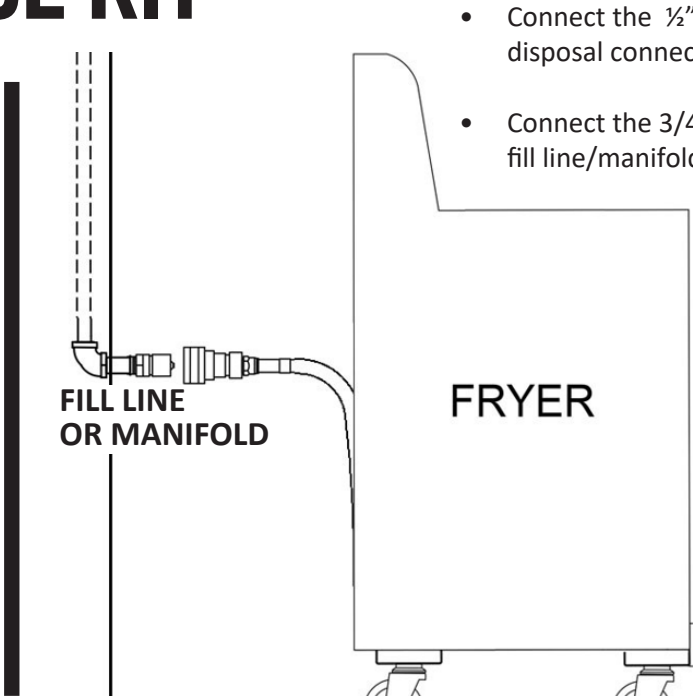


FRYER MANIFOLD / HOSE KIT (OPTIONAL)

Optional Components: Fryer Manifold (PN:700553) Fryer Hose Kit (PN: 700155)



- Attach the Manifold bracket to the wall using appropriate fasteners (not included). The manifold should be mounted 18" - 36" from the ground.
- The manifold kit will connect to the fill line, and provide 3 additional connections.
- Any unused ports should be plugged with a 3/4" cap.



- Connect the 1/2" discharge Hose Kit to the disposal connection on the back of the fryer.
- Connect the 3/4" Male QD to the fill line/manifold

INSTALLATION OVERVIEW (DIRECT PUMP)

